

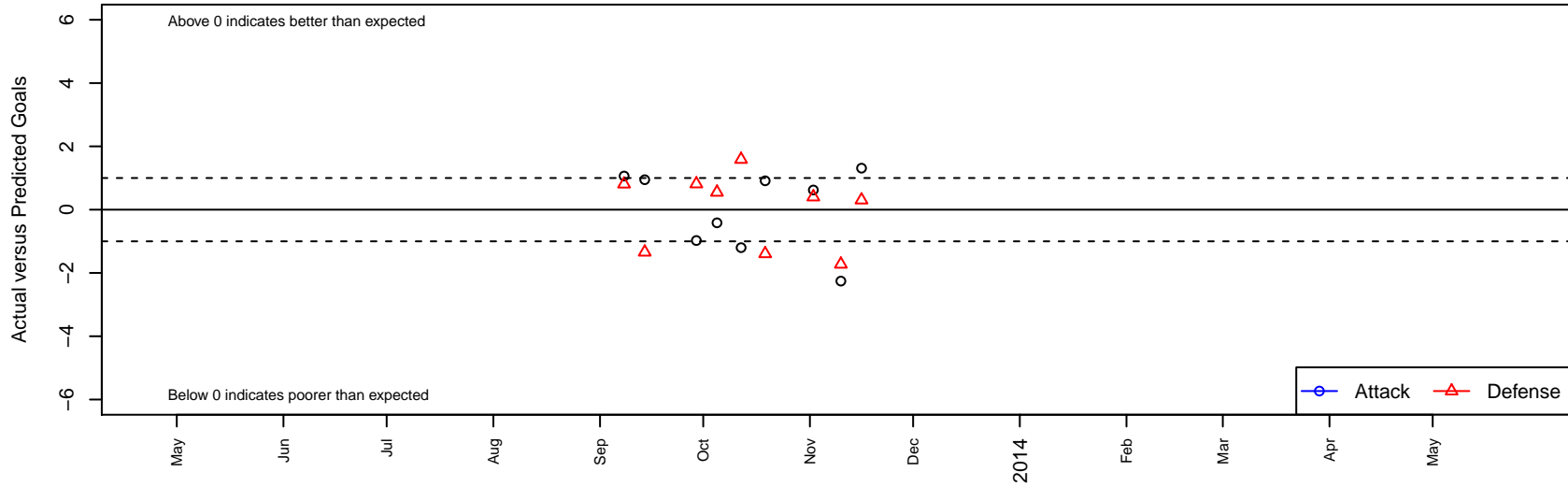
# PSV Union FC G02

, CAN  
 G02 total strength=438  
 attack=0.53 defense=0.15  
 alt names used:  
 PSV Union FC 02G

Venues played:  
 NorCal Premier F11 2 – Region 2–3–4 U11



**PSV Union FC G02**  
 Dots are actual minus expected GF (blue circles) and GA (red triangles).  
 Blue line is smoothed change in attack strength. Red is smoothed change in defense strength.



	<b>date</b>	<b>home</b>		<b>away</b>		<b>venue</b>	<b>pred.home</b>	<b>pred.away</b>
2775	2013-11-16	CV San Jose FC Academy G02	3	PSV Union FC G02	3	NorCal Premier FI1 2 – Region 2-3-4 U11	3.3	1.69
2736	2013-11-10	Diablo FC G02	5	PSV Union FC G02	0	NorCal Premier FI1 2 – Region 2-3-4 U11	3.3	2.26
2520	2013-11-02	PSV Union FC G02	2	De Anza Force Blue G02	5	NorCal Premier FI1 2 – Region 2-3-4 U11	1.4	5.40
2241	2013-10-19	Heritage SC Firestorm G02	5	PSV Union FC G02	3	NorCal Premier FI1 2 – Region 2-3-4 U11	3.6	2.09
2085	2013-10-12	Pleasanton Rage Orange II G02	1	PSV Union FC G02	0	NorCal Premier FI1 2 – Region 2-3-4 U11	2.6	1.20
1887	2013-10-05	PSV Union FC G02	3	San Ramon 03 Azuri G02	1	NorCal Premier FI1 2 – Region 2-3-4 U11	3.4	1.55
1812	2013-09-29	PSV Union FC G02	1	GSC Gryphons Red G02	6	NorCal Premier FI1 2 – Region 2-3-4 U11	2.0	6.81
1401	2013-09-14	PSV Union FC G02	4	Castro Valley United Green G02	4	NorCal Premier FI1 2 – Region 2-3-4 U11	3.1	2.66
1324	2013-09-08	Burlingame SC Freeze G02	7	PSV Union FC G02	2	NorCal Premier FI1 2 – Region 2-3-4 U11	7.8	0.94